

The Land Matrix Initiative
Key-features, limits and applicability of a comprehensive database

Kerstin Nolte and Martin Ostermeier
 GIGA German Institute of Global and Area Studies



The Land Matrix Initiative









- ...is a global and independent land monitoring initiative
- ... has the aim to: **Promote transparency and open data in decision-making over land and investment**
- ... was set up to respond to the lack of data on large-scale land acquisitions
- Ongoing process of decentralization
 - five Regional Focal Points
 - Project Support Unit (PSU) at University of Pretoria









Database characteristics of the Land Matrix Global Observatory

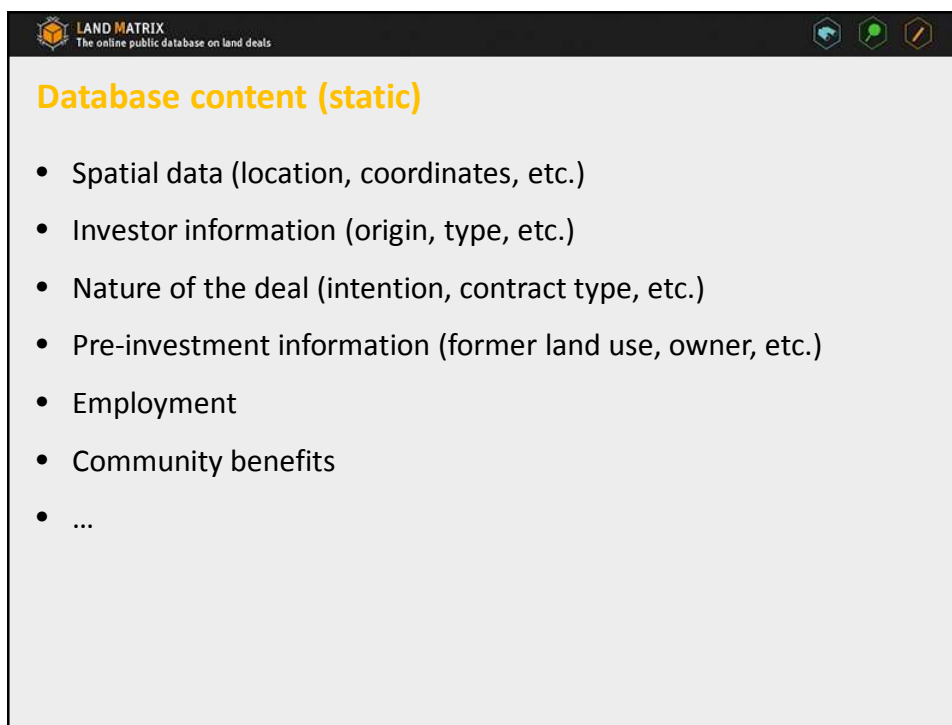
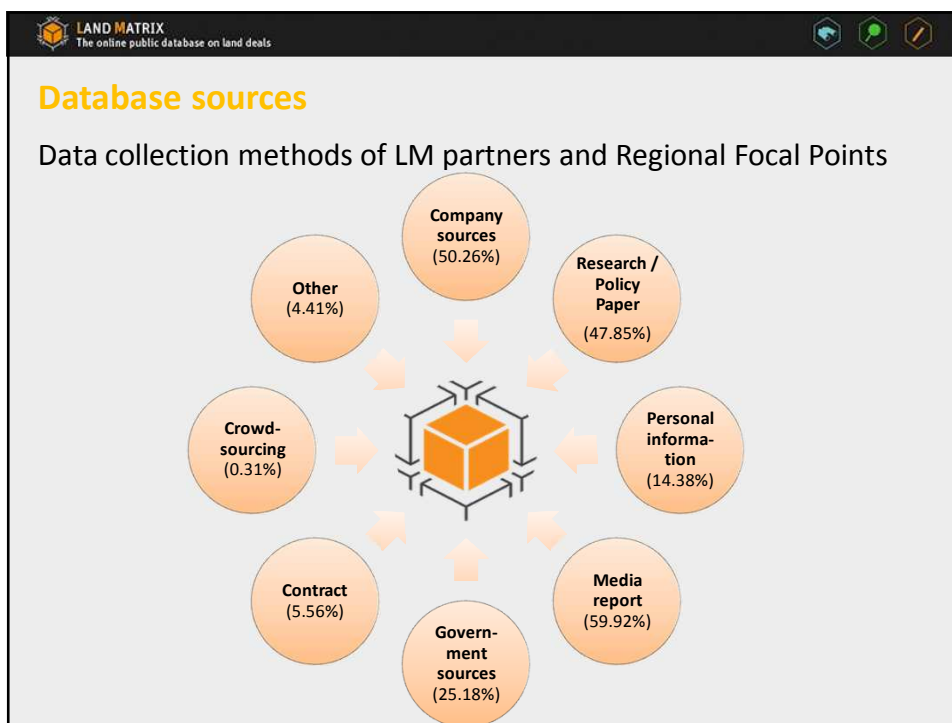
- Records intended, concluded or failed land acquisitions (land acquired by purchase, lease or concession)
 - In low and middle income countries
 - For agricultural production, forestry, carbon trading, industry, renewable energy production, conservation and tourism
- Land deals in the database ...
 - Entail a transfer of rights to use, control or ownership of land through sale, lease or concession
 - Have been initiated since 2000
 - Cover an area of 200 hectares or more
 - Imply the potential conversion of land from smallholder production, local community use or important ecosystem service provision to commercial use

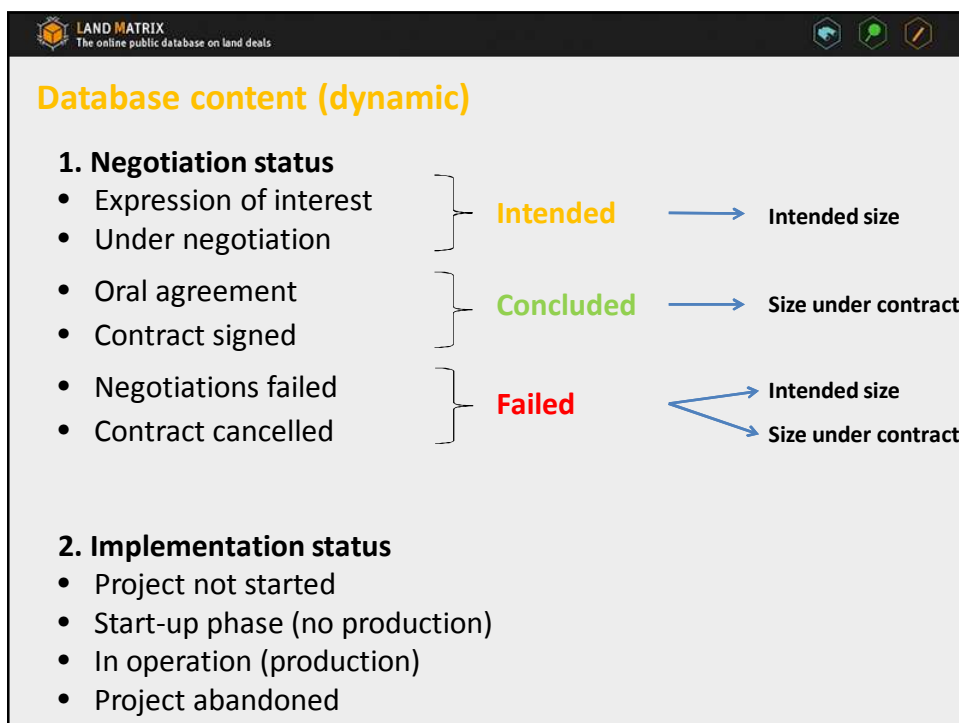



Database sources

Data collection methods of LM partners and Regional Focal Points

- Global and local networks
- Land Observatories
- Thematic Observatories
- Crowdsourcing
- Land Policy Initiative (Africa only)





LAND MATRIX
The online public database on land deals

Data overview: Negotiation status

International large-scale land acquisitions according to negotiation status			
	Number of cases	Intended size (in million ha)	Size under contract (in million ha)
Concluded deals	1.041	64,2	38,2
Intended deals	194	16,0	n.a.
Failed deals	84	7,6	1,9
No Information	85		

- High area sizes under concluded deals
- Aggregate global demand for land is very high indicating a large number of pending deals
- Intentions/announcements still exceed actual contract size by far
- Quite some failure at negotiation and concluded stage (contract cancelled)

Note: Data as of Feb 14, 2015

LAND MATRIX
The online public database on land deals

Data overview: Implementation status

International land acquisitions according implementation status			
	Number of concluded deals	Size under contract in million ha	Current size under production
Project not started	72	3.1	n.a.
Startup phase (no production)	131	2.8	n.a.
In operation (production)	536	17.9	3.6
Project abandoned	33	1.4	n.a.
No information	269	13.1	n.a.
Total (deals or ha)	1,041	38.2	3.6

- An important and growing number of deals starts operating (contracted area: 17.9 million ha)
- Continued trend of project implementation: Deals are moving towards the production phase, it is not (only) land speculation
- Little but fast growing area comes actually under production

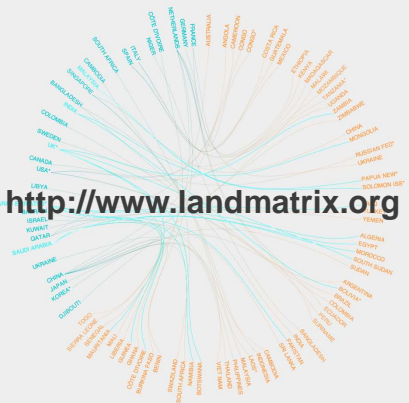
Note: Data as of Feb 14, 2015

LAND MATRIX
The online public database on land deals

Data challenges

- Dynamic**
- Time-lag**
- Reliability**
- Contradicting information**
- Potential biases due to...**
 - Open data policies of some countries (e.g. Cambodia)
 - Interest of media and researchers in certain regions (e.g. Africa), on certain investors (e.g. emerging investor countries) and in certain sectors (e.g. agrofuels)
 - Extent of global / local networks

LAND MATRIX
The online public database on land deals



<http://www.landmatrix.org>

Kerstin Nolte / Martin Ostermeier
GIGA German Institute of Global and Area Studies
Neuer Jungfernstieg 21 / 20354 Hamburg (Germany)
Tel. +49-(0)40-42825-768
Email: Landmatrix@giga-hamburg.de
Skype: Martin-Ostermeier
Homepage: <http://www.giga-hamburg.de>

LAND MATRIX
The online public database on land deals

Discussion

- How can you contribute?
- What can we do better?
- ...